

## ELA sanitary container

Container with WC, shower or a combination, width 2.435 metre

# ela[container]



### Brief Description

Temporary workstations and living spaces need suitable sanitary facilities. ELA sanitary containers ensure that such facilities can be added with ease. These containers can also be reliably used as a public toilet or as a washroom on campsites.

The 2.5-metre wide ELA sanitary containers are available in various basic configurations. The 20-foot ELA sanitary containers feature combinations with WCs and showers, only showers (up to five) or only WCs (up to four). The shorter 10-foot ELA sanitary containers feature configurations with WC sections for men and women, as well as a combination of shower and WC.

Thanks to the plastic-coated walls and the galvanised floor with protective coating, the rooms are extremely hygienic and easy to maintain. And they are also particularly comfortable. Fan heaters or electric convectors and hot water tanks ensure hot water and pleasant room temperatures. Partition walls and room dividers generate the necessary level of privacy. Suitable waste water tanks can be added to ELA sanitary containers as needed.

The ELA sanitary container meets the high quality standards of ELA: certified quality – made in Germany.

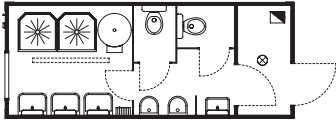
### Features

- + Hot-dip galvanised, free-standing steel frame construction
- + Triple stackable
- + Galvanised aluminium, 0.75 mm thick, accessible hard roofing (according to DIN 12944)
- + Rainwater drainage through four internal downspouts
- + Hot-dip galvanised dead floor with protective coating
- + Exterior: hot-dip galvanised, 0.63 mm thick, beaded steel sheeting
- + Interior: hot-dip galvanised smooth metal sheet, 0.63 mm thick, with plastic-coated decorative film (magnetic)
- + Carpet or PVC flooring in brown or marbled grey
- + Insulation values PUR rigid foam
  - Roof: 80 mm PUR rigid foam,  $U = 0.297 \text{ W/m}^2\text{K}$
  - Walls: 50 mm PUR rigid foam,  $U = 0.456 \text{ W/m}^2\text{K}$
  - Floor: 50 mm PUR rigid foam,  $U = 0.438 \text{ W/m}^2\text{K}$
- + Double windows with tilt and turn hardware
- + Insulated glazing,  $U = 1.1 \text{ W/m}^2\text{K}$
- + CEE 400 V/32 A electrical input and output concealed behind inspection hatch
- + 2 empty conduits in the upper frame for the installation of additional cables (telephone, IT, etc.)
- + Electrical installation according to DIN VDE 0100
- + Drain DN 100, supply 1" or 3/4"
- + Can be combined with other ELA containers
- + Waste water tank can be added

## 20 foot ELA sanitary container with 2 showers/2 WCs

Article: CF20H25-S000

Dimensions: 6,055 mm × 2,435 mm × 2,890 mm  
Clear room height: 2,500 mm



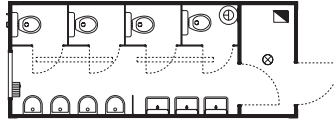
### Features

- + 2 shower stalls
- + 2 WCs
- + 2 urinals
- + 4 vanities
- + Mirror, shelf, towel hook, paper holder
- + 1 tilt and turn window approx. 1,000 mm × 1,200 mm, ornamental glazing, without roller shutter
- + 1 forced air heater, 2 kW
- + Drain DN 100, supply 1"
- + 1 hot water tank, 300 litres, 6 kW
- + 2 damp-proof surface-mounted light fixtures, each with 1 × 58 W
- + Connected load: 8.2 kW

## 20 foot ELA sanitary container with 4 WCs

Article: CF20H25-SWC4

Dimensions: 6,055 mm × 2,435 mm × 2,890 mm  
Clear room height: 2,500 mm



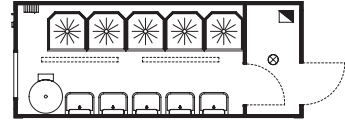
### Features

- + 4 WCs
- + 4 urinals
- + 3 vanities
- + Mirror, shelf, towel hook, paper holder
- + 1 tilt and turn window approx. 1,000 mm × 1,200 mm, ornamental glazing, without roller shutter
- + 1 forced air heater, 2 kW
- + Drain DN 100, supply 1"
- + 1 hot water tank, 30 litres, 2 kW
- + 2 damp-proof surface-mounted light fixtures, each with 1 × 58 W
- + Connected load: 4.2 kW

## 20 foot ELA sanitary container with 5 showers

Article: CF20H25-SDU5

Dimensions: 6,055 mm × 2,435 mm × 2,890 mm  
Clear room height: 2,500 mm



### Features

- + 5 shower stalls
- + 5 vanities
- + Mirror, shelf, towel hook
- + 1 tilt and turn window approx. 1,000 mm × 1,200 mm, ornamental glazing, without roller shutter
- + 1 forced air heater, 2 kW
- + Drain DN 100, supply 1"
- + 1 hot water tank, 400 litres, 6 kW
- + 2 damp-proof surface-mounted light fixture, each with 1 × 58 W
- + Connected load: 8.2 kW

## 20 foot ELA sanitary container black/white

Article: CF20H25-SSW0

Dimensions: 6,055 mm × 2,435 mm × 2,890 mm  
Clear room height: 2,500 mm



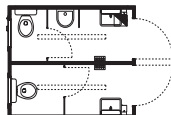
### Features

- Same as CF20H25-B000, but with 1 additional WC/shower compartment
- + 1 shower stall
  - + 1 WC and 1 vanity
  - + Mirror, shelf, towel hook, paper holder
  - + 1 sanitary tilt window
  - + 3 tilt and turn windows approx. 1,000 mm × 1,200 mm, ornamental glazing, without roller shutter
  - + 1 frost monitor, 0.5 kW
  - + 3 electric convectors 1 kW with thermostat
  - + Drain DN 100, supply 3/4"
  - + 3 damp-proof surface-mounted light fixtures, each with 1 × 58 W
  - + Connected load: 5.7 kW

## 10 foot ELA sanitary container with 2 WCs (W/M)

Article: CF10H25-SDH1

Dimensions: 2,990 mm × 2,435 mm × 2,890 mm  
Clear room height: 2,500 mm



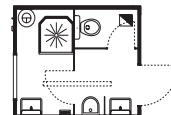
### Features

- + 2 WCs (W/M)
- + 1 urinal
- + 2 vanities
- + 2 hot water tanks, 5 litres, 2 kW
- + Mirror, shelf, towel hook, paper holder
- + 2 sanitary tilt windows
- + 2 frost monitors, 0.5 kW
- + Drain DN 100, supply 1"
- + 2 damp-proof surface-mounted light fixture, each with 1 × 58 W
- + Connected load: 5.2 kW

## 10 foot ELA sanitary container with 1 shower/1 WC

Article: CF10H25-S000

Dimensions: 2,990 mm × 2,435 mm × 2,890 mm  
Clear room height: 2,500 mm



### Features

- + 1 shower stall
- + 1 WC
- + 1 urinal
- + 2 vanities
- + Mirror, shelf, towel hook, paper holder
- + 1 tilt and turn window approx. 1,000 mm × 1,200 mm, ornamental glazing, without roller shutter
- + 1 forced air heater, 2 kW
- + Drain DN 100, supply 1"
- + 1 damp-proof surface-mounted light fixture, 1 × 58 W
- + Connected load: 8.2 kW